

Feedback Analysis

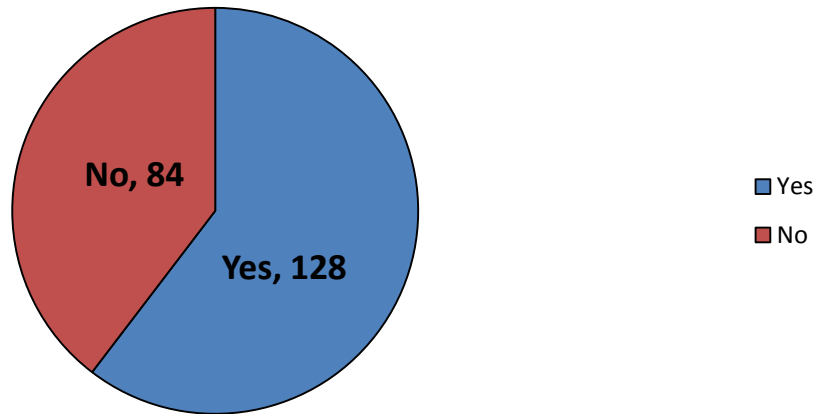
➤ Feedback from students

The feedback from the students were collected online as per the questionnaires provided by the NAAC. Responses recorded through the designed a special link on various college related issues and NACC's recommended questionnaires are as follows:

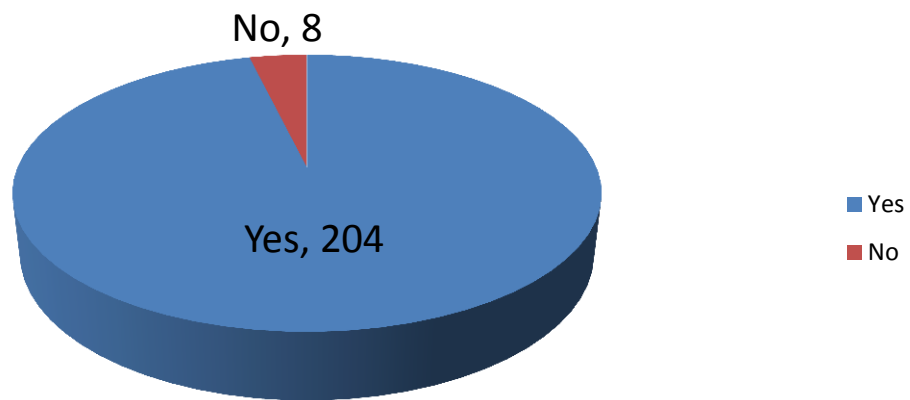
Year	Faculty	Total response
2017-18	Arts	212
	Commerce	
	Science	

Parameter	Frequency				
	Yes	No	Maybe		
1	128	84			
2	204	08			
3	203	03	06		
4	205	07			
5	200	12			
6	194	18			
7	183	29			
8	202	10			
9	142	70			
10	143	69			
20	191	21			
21	190	22			
	Excellent	Very good	Good	Satisfactory	unsatisfactory
11	126	51	30	05	00
12	120	54	35	03	00
13	101	61	33	17	00
14	100	75	28	04	00
15	69	77	44	06	16
16	77	52	65	11	07
17	105	56	37	14	00
18	90	56	57	60	02
19	10	19	38	60	138

SSS Q.1
Are you Rail way / S.T. Pass Holder

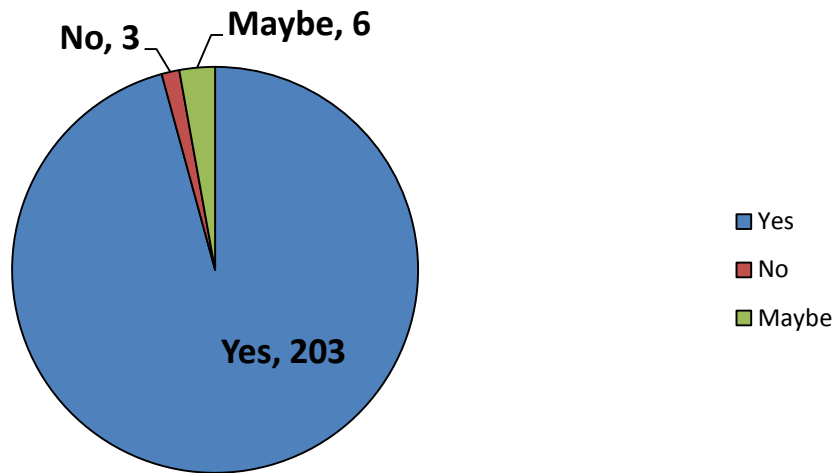


SSS Q.2
Do you know the names of Principal and Vice principal od your college.

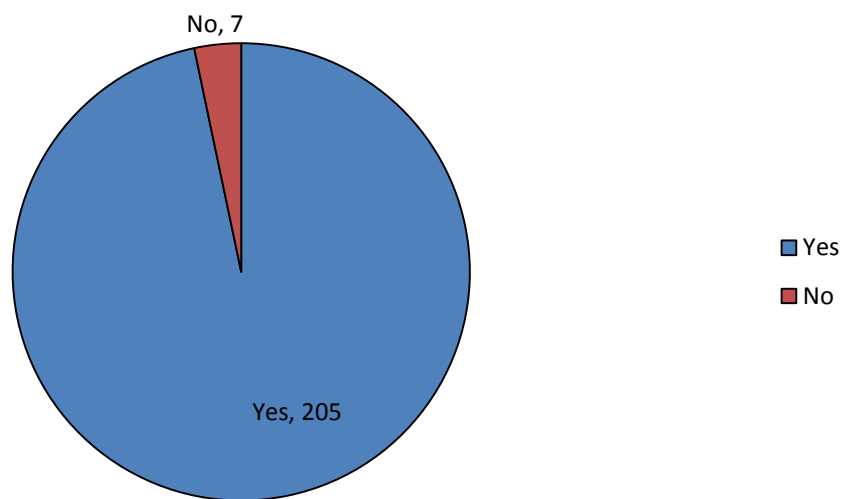


SSS Q.3

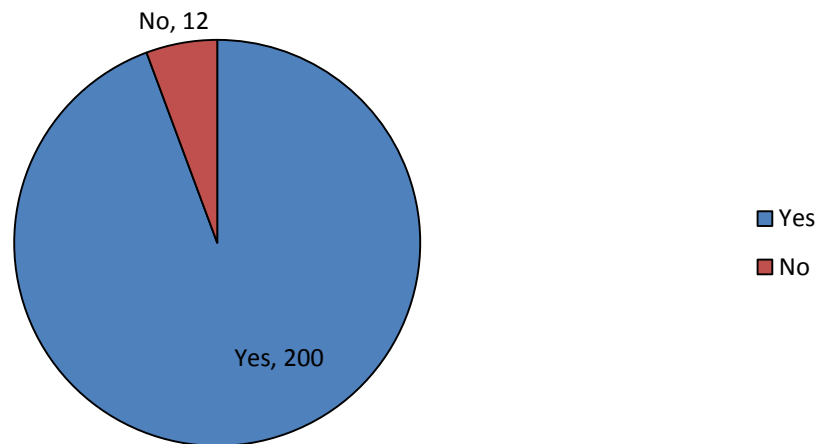
Are these officials easily accessible to you



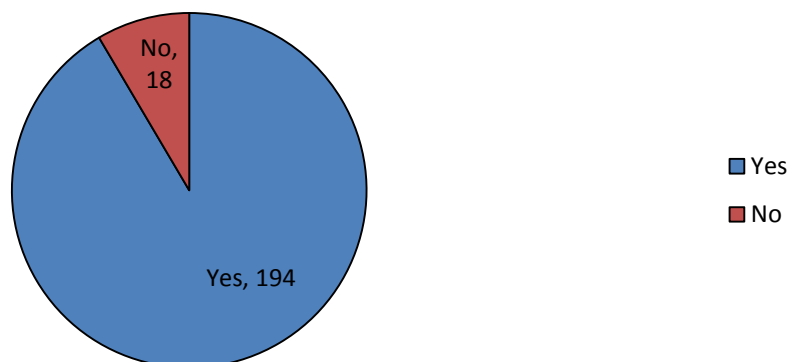
SSS Q.4 Do you attend the college regularly?



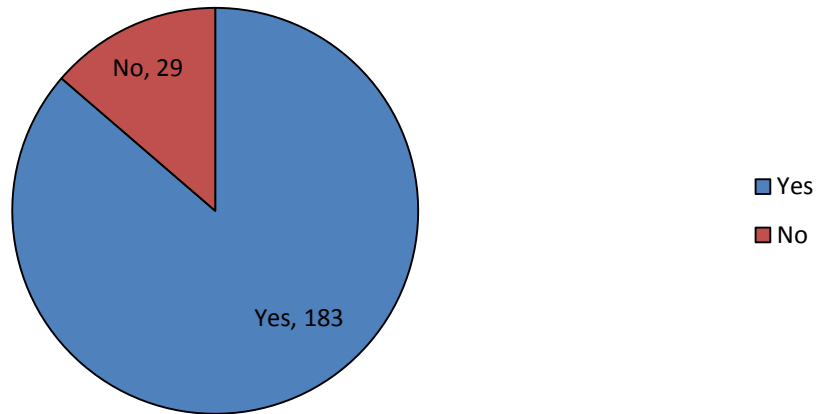
SSS Q. 5 Do you feel that attendance exercise should be done every day



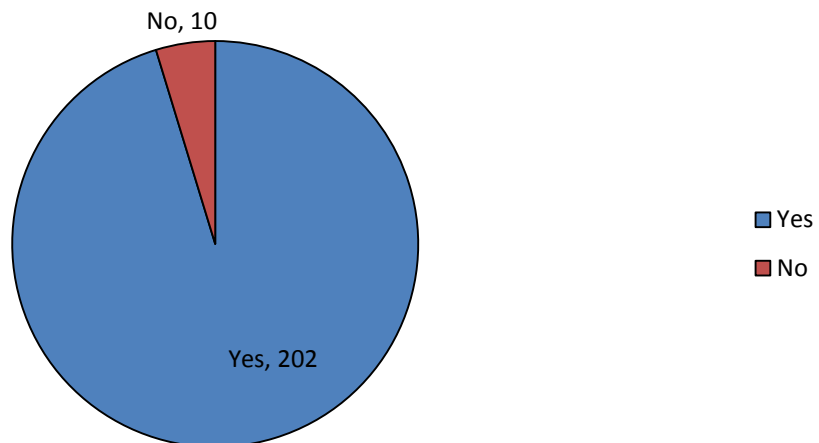
SSS Q.6 Are you aware about the various facilities and student support activities provided to you by the college:



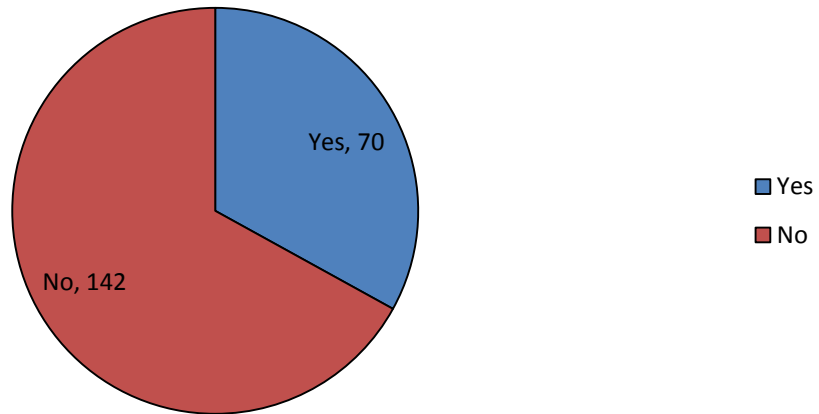
SSS Q.7 Are you satisfied about these facilities and services?



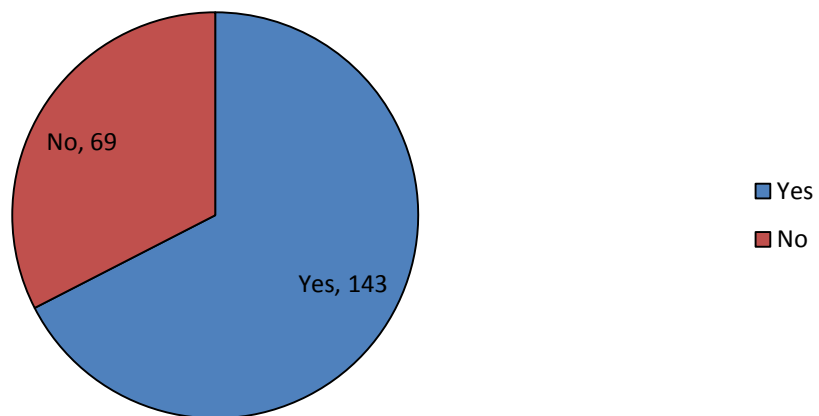
SSS Q.8 Do you visit library regularly and enjoy reading room facilities?



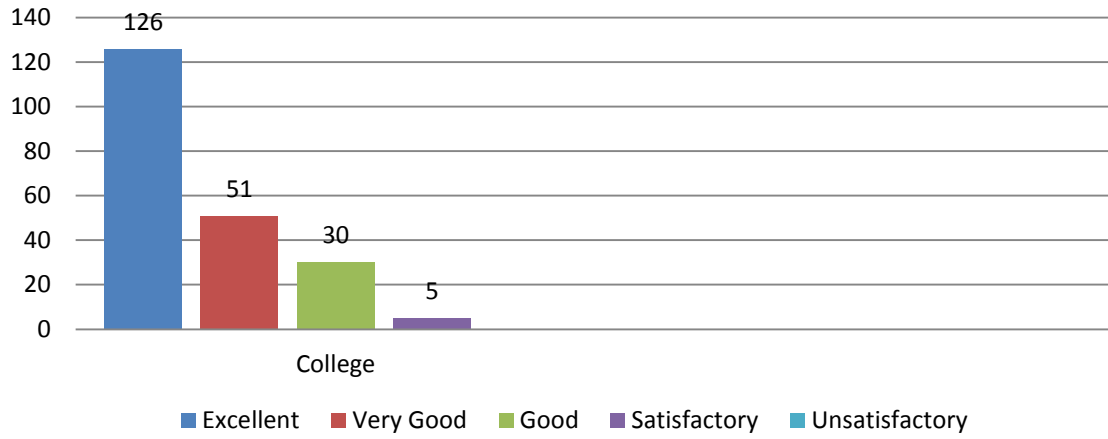
SSS Q.09 Do you visit Gymkhana and Participate in sports activities



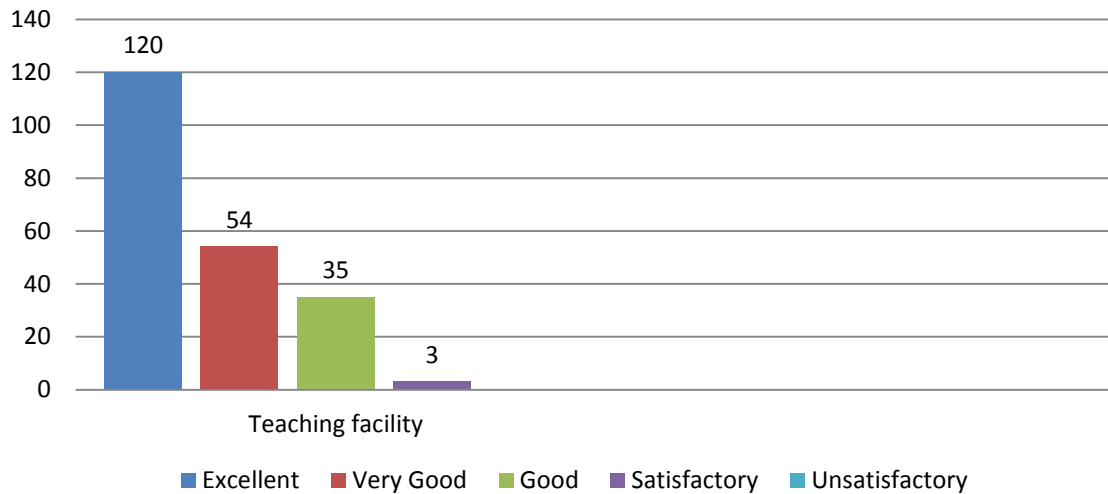
SSS Q.10 Have you enrolled yourself in NCC/NSS activity?



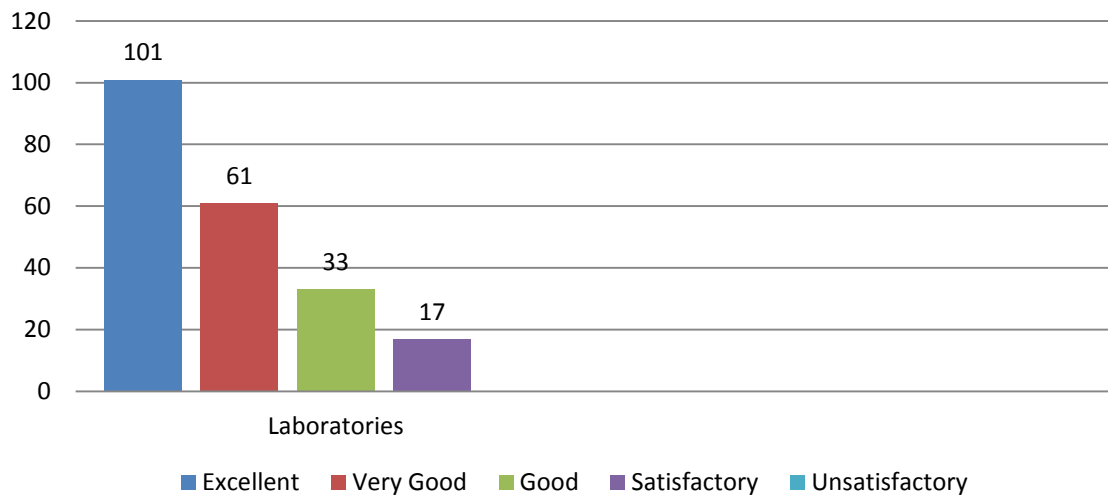
SSS Q.11 What will be your rating for the following [College]



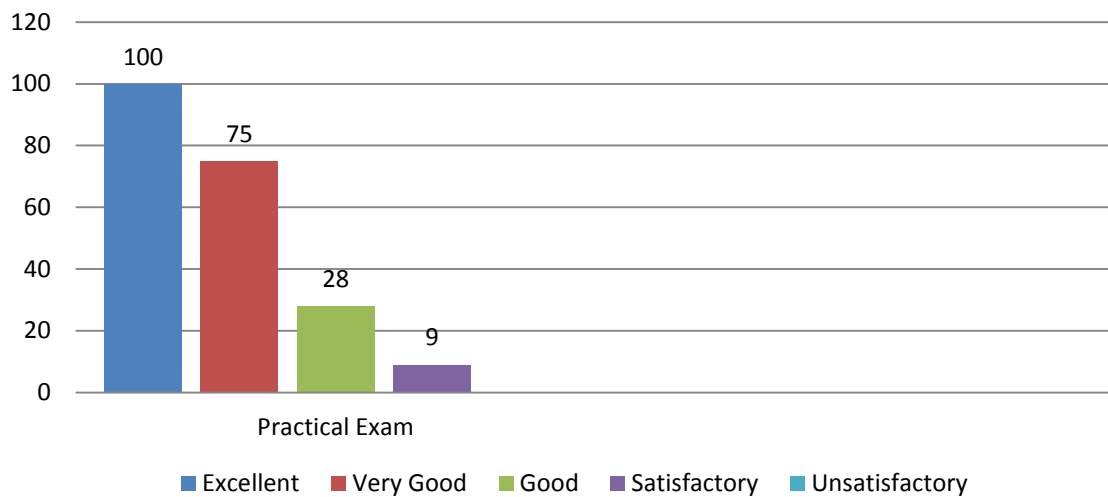
SSS Q.12 What will be your rating for the following [Teaching Facility]



SSS Q.13 What will be your rating for the following [Laboratories (If Applicable)]



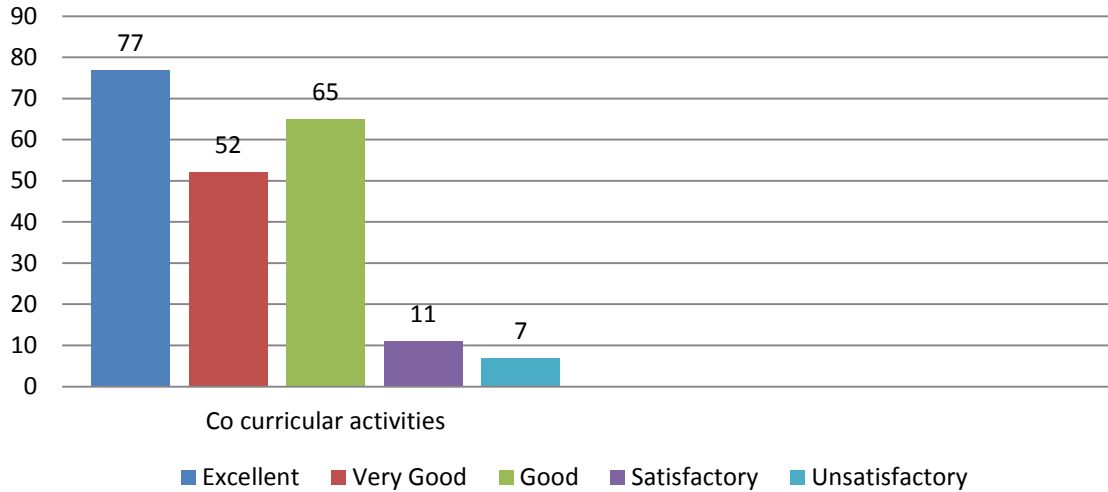
SSS Q.14 What will be your rating for the following [Arrangement of Practical



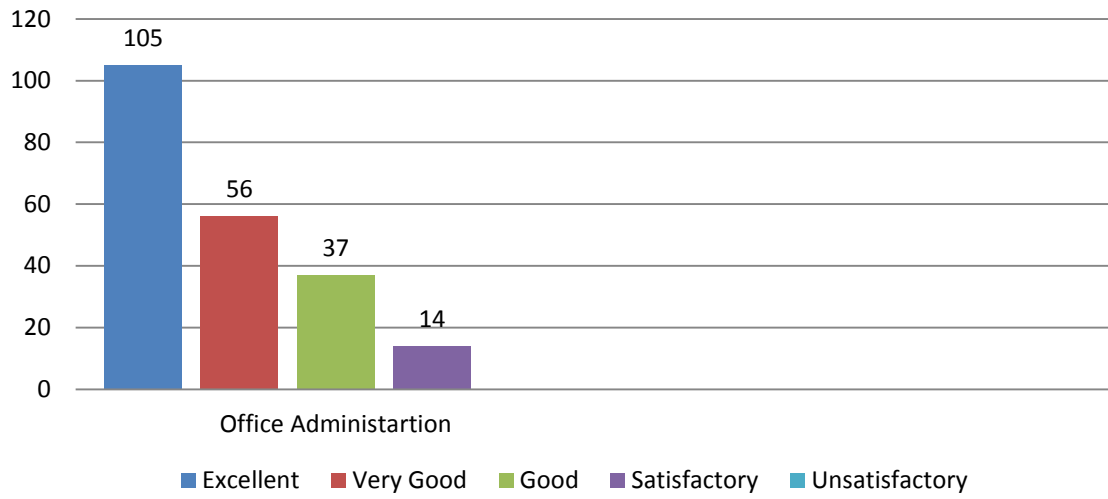
SSS Q.15 What will be your rating for the following [Extension Services]



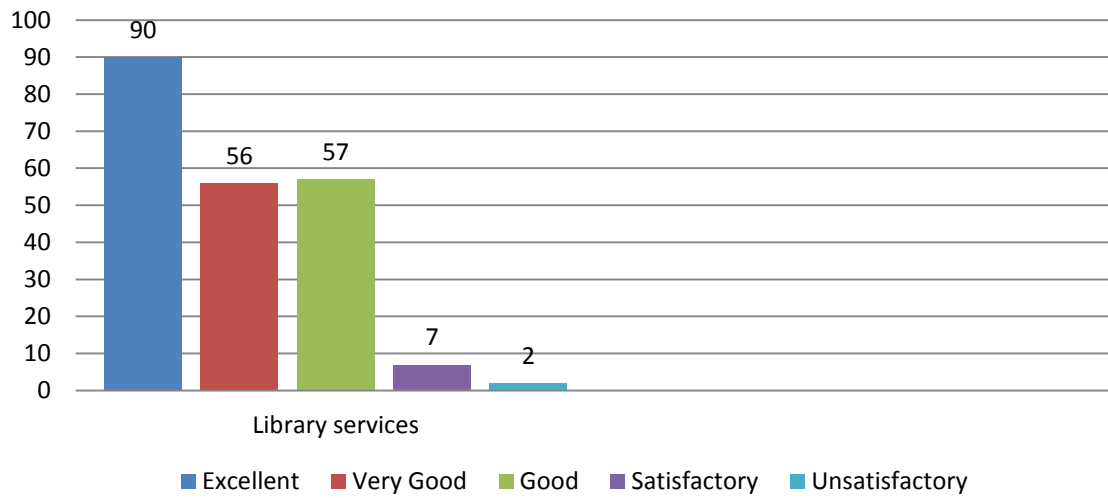
SSS Q.16 What will be your rating for the following [Co-Curricular Activities]



SSS Q.17 What will be your rating for the following [Office and Administration]



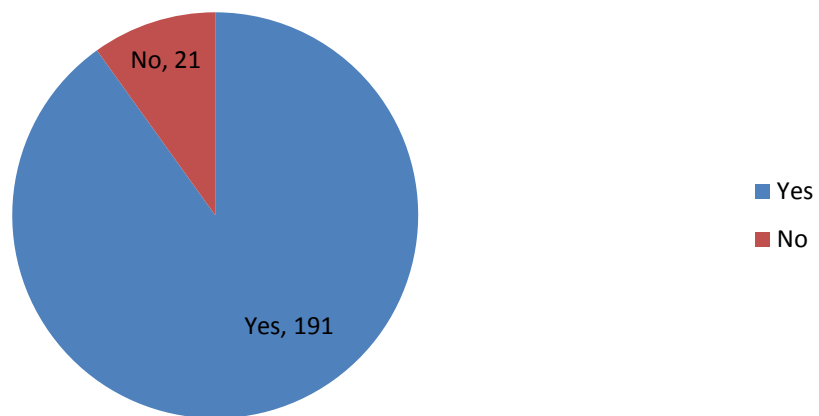
SSS Q.18 What will be your rating for the following [Library Service]



SSS Q. 19 What will be your rating for the following [Canteen Facilities]



SSS Q. 20 Do you read the Prospects of the college thoroughly



SSS Q.21 Do you read the Mission statement and Goals of the College

